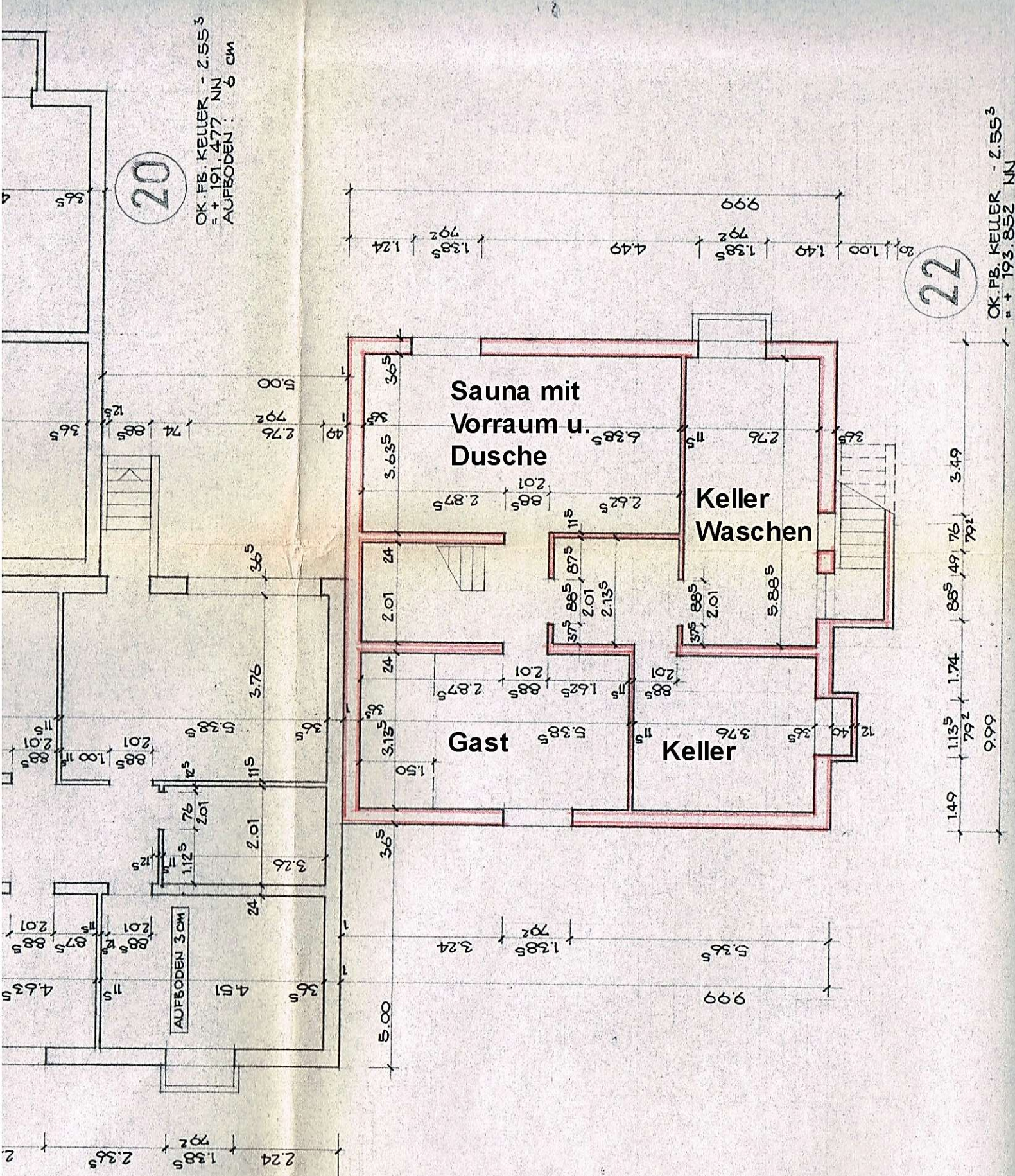


20

OK.FB.KELLER - 2.55³
= + 191.477 NN
AUFBODEN : 6 CM

22

OK.FB.KELLER - 2.55³
= + 193.852 NN



21

OK.FB.KELLER - 2.55³
= + 192.852 NN
AUFBODEN : 8 CM

Untergeschoss

1.49 | 1.13⁵ | 1.74 | 8.8⁵ | 4.9 | 7.6 | 3.49
7.92 | 9.99